

FynoBlock

# Outdoor Pavers & Slabs



Your vision. Our Pavers

Pavers & Slabs | Retaining walls | Blocks

[fynoblock.com](https://fynoblock.com)



YOUR GO-TO GUIDE FOR SELECTING COLORS  
AND MATERIALS FOR YOUR BACKYARD

Lunar Path in Brown



The ultimate guide to selecting colors and materials for your backyard

## Contents:

- 03. About FynoBlock
- 06. Lifetime Warranty
- 07. Material Guide
- 11. Why choose pavers over asphalt
- 12. Texture options

### Pavers & Slabs

- 15. Aspen Stone
- 17. Lunar Path
- 21. Arona
- 23. Lava Falls
- 25. Flint Stone
- 27. Bristol Valley
- 29. Bohemian Buffalo
- 31. Holland Lux

### Retaining walls

- 35. Cascade
  
- 38. Do's and don't when selecting color choices
- 39. Technical information
- 41. Paver foundation
- 44. Patterns
- 45. Getting to know your home
- 49. Commercial & industrial

### Legend



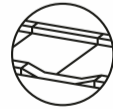
De-icing salt



Residential / pedestrian



Commercial



Accents



Resistant permeable



Light duty vehicular



Heavy vehicle



No heavy vehicle

The color options are composed of a range of darker and lighter tones for an authentic look. The natural ingredients in this recipe allow each stone to have a unique tone, veining, and texture. Samples of colors are provided for reference only. Colors of the actual product may differ.

## Quality is our top priority

Homeowners, architects, builders, and developers alike turn to us for the best paver products on the East Coast because of our clear objective, years of experience, and a commitment to using traditional worldwide innovation methods.



### LOW MAINTENANCE

Using natural and high-quality materials, our pavers are strong, durable, and reliable and require minimal maintenance. No special treatments are required to maintain the overall quality and aesthetics, meaning you get to enjoy your product for years to come without the hassle of maintenance.



### AFFORDABLE

By choosing FynoBlock to complete your next outdoor design with high grade pavers, you are instantly increasing the value of your investment. Rather than paying for expenses of repair, maintenance or replacement with other material options, you also get to enjoy a one time investment for a product that will last a lifetime.



### DURABILITY YOU CAN TRUST

Made from a mixture of high quality materials, pavers and slabs are stronger and more durable than other similar product options. Able to withstand even the harshest weather elements, pavers offer peace of mind for any environment.



### SUSTAINABILITY

Our goal is to bring customers a finished product that will last forever while caring for the environment. Our process includes using natural resources, such as crushed stone, sand and cement, to create pavers that you can be proud of.

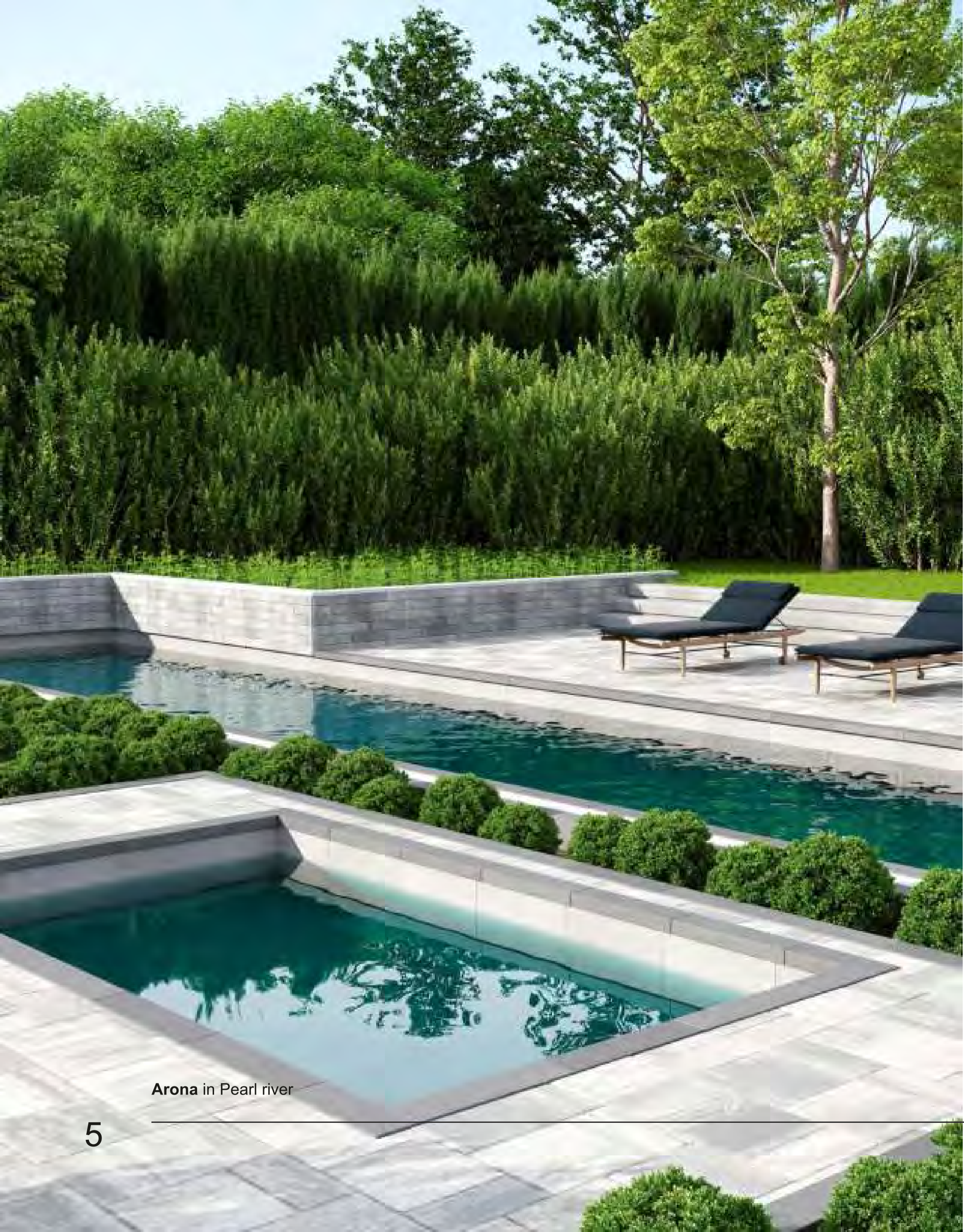
**FynoBlock**

Your vision. Our Pavers.



Arona in Mulberry silk

ABOUT ORANGE PAVERS



Arona in Pearl river

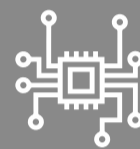
## A lifetime guaranteed style

With FynoBlock, you get more than just beautiful products, you get a partner in carrying out your vision to full completion. Working together, we are present and invested in the design process, installation, and completion of every project we take on.



### INSPIRATION

Our company was built on inspiration. In order to help our customers create their dream outdoor living spaces, we love to share that same spirit.



### INNOVATION

At FynoBlock we constantly strive to produce the most advanced product by incorporating the latest and most effective methods and technologies.



### QUALITY

In order to ensure the highest standards for our concrete paver systems, our plants receive annual certification by The Interlocking Concrete Pavement Institute (ICPI).



### FOCUS

With a distinctive and customized approach, we embark on each project with enthusiasm and passion to create the desired outdoor living space envisioned by our customer.



### EXPERTISE

Renowned for our expertise within the hardscapes industry, we take great pride in our ability to provide others with insights, education, and training.

**FynoBlock**

Your satisfaction is our mission and we are with you every step of the way

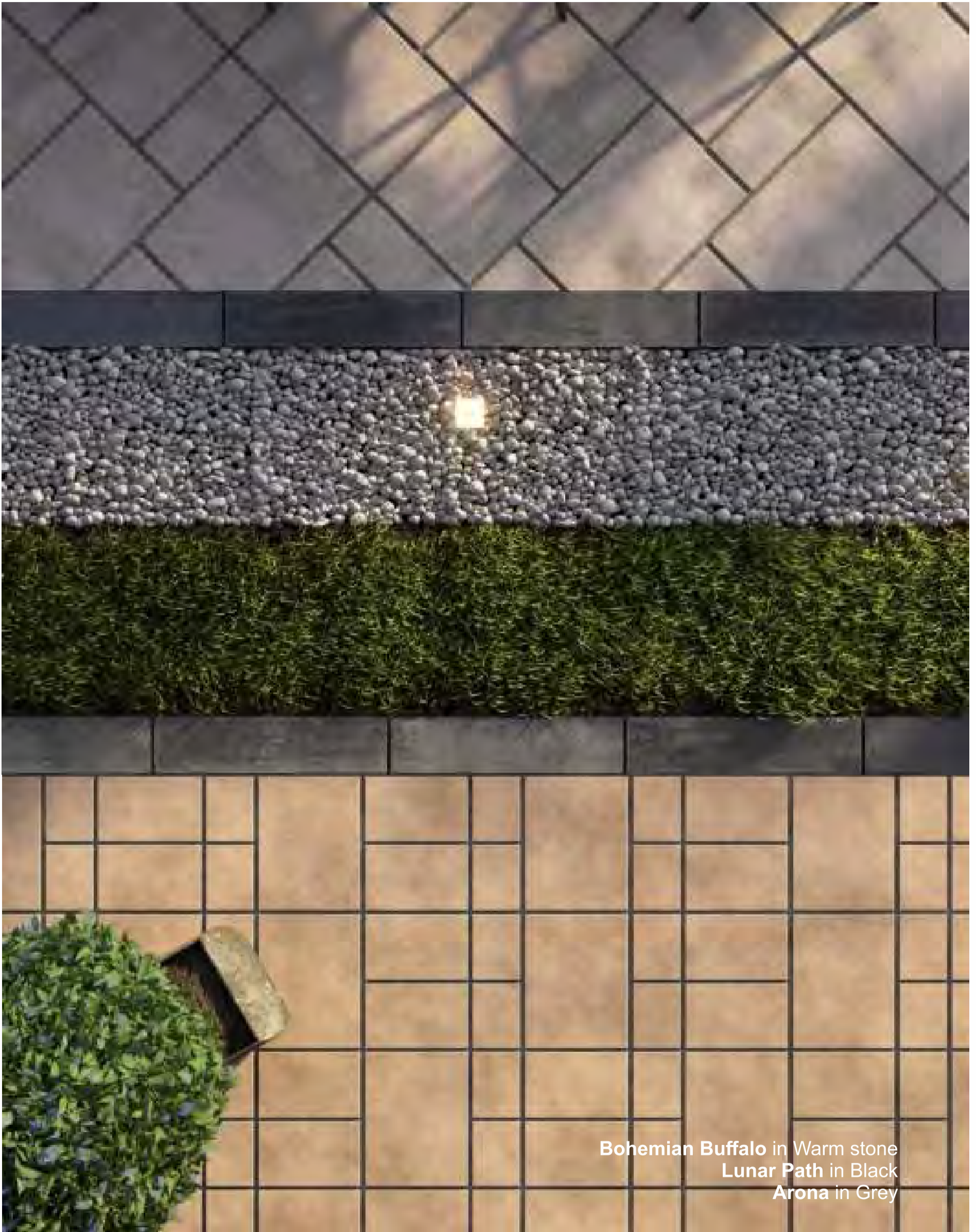
## Here are some common **Do's** and **Don'ts** when selecting material choices

- Explore a healthy range of style and design options (eliminate-not needed).
- Visit our showroom and view our product brochures.
- Play with mixing textures and forms (smooth/textured, dark/bright, wide/narrow tiles, etc.).
- Invest in the right material for your specific needs.
- View pavers in sunlight for accuracy.

- Don't commit to any color without viewing it in natural light.
- Don't combine more than three core colors (with the exception of wood and stone).
- The color options are composed of a range of darker and lighter tones for an authentic look. The natural ingredients in this recipe allow each stone to have a unique tone, veining, and texture. Samples of colors are provided for reference only.
- Colors of the actual product may differ.







Bohemian Buffalo in Warm stone  
Lunar Path in Black  
Arona in Grey





# Why choose pavers over asphalt



## FUNCTIONALITY

Makes it possible to quickly and easily replace communications, and make repairs on your site.



## ECO-FRIENDLY

No harmful substances are released when heated.



## DURABILITY

Pavers are flexible and won't snap when stressed; therefore, water cannot seep inside due to its density and lack of air pockets.



## ENDURANCE

We provide a 100-year workmanship warranty with every paver hardscape we install.



## DESIGN

With our wide array of colors and sizes to choose from, you can create virtually unlimited patterns and styles.

Concrete pavers made from recyclable natural materials are an outstanding example of an eco-friendly patio solution.

FynoBlock are an eco-friendly choice enabling the enhancement of backyard and driveways while protecting the environment. Our pavers are made responsibly from recyclable natural materials, require far less fuel quarrying or transporting, look very attractive, and do not emit harmful substances when heated.

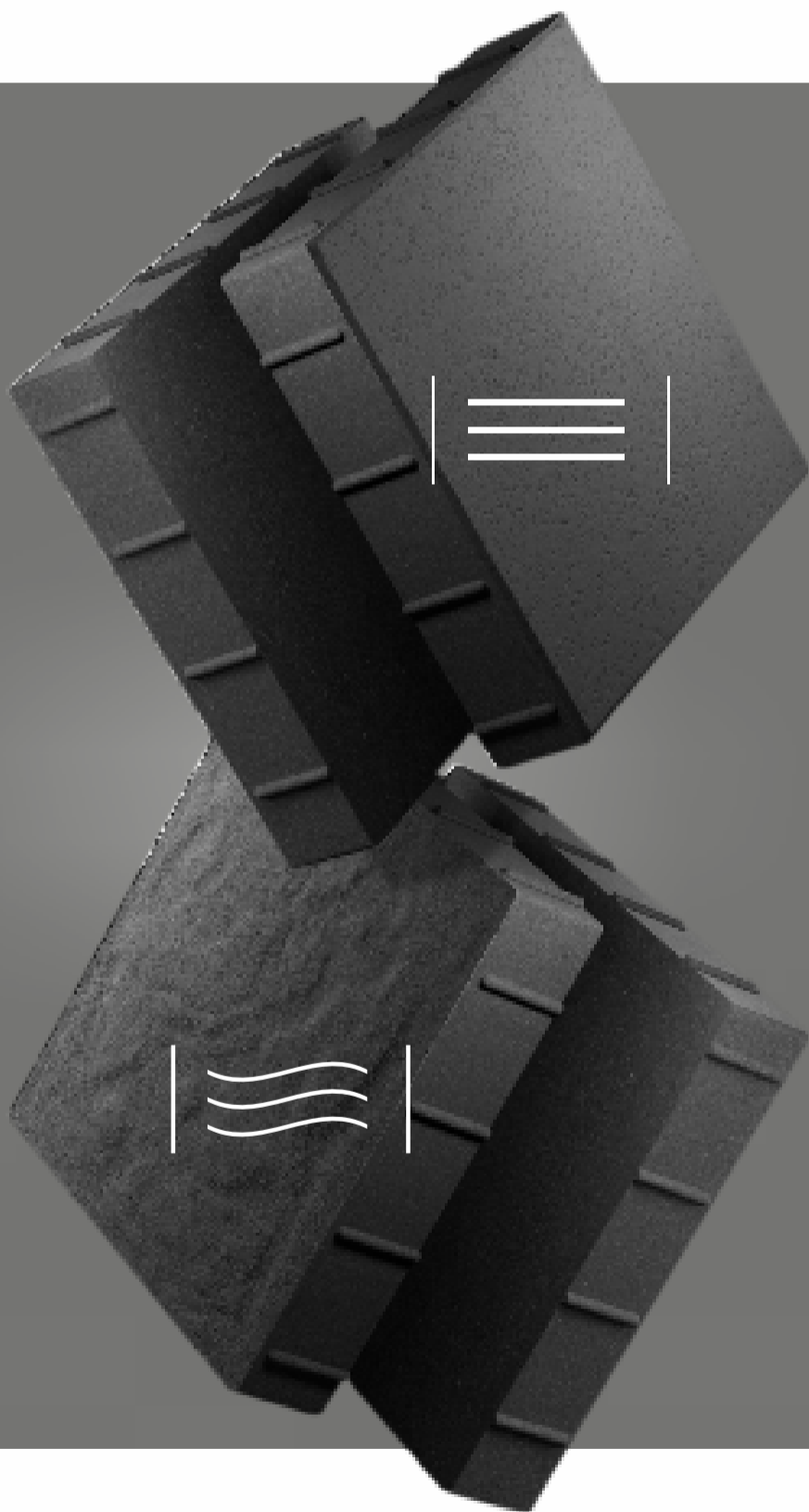
## Paver material options

Whether you are designing a pathway, patio, driveway, or pool, you'll want to be sure you choose the best material for the project. With pavers, your options include clay, concrete, manufactured porcelain, and more.

One of the most cost effective and durable options is concrete pavers. By choosing to use concrete as your paver material, you can enjoy the benefits it offers, including good traction, wide color options, color longevity, and stain and chemical resistance.

## Residential & Commercial

Designed to last. Whether your design requires a rugged environment or a sleek indoor space, we have the commercial grade pavement for you.



### Smooth or Textured?

Explore our two collections

#### |≡| Smooth

Colorful with rich monochromatic tones and unique color mix options.

A contemporary touch of straight endless lines.

#### |≡≡| Textured

Cutting stone is an authentic, classic way to express elegance. Raw materials have a charming and noble quality.

# FynoBlock

## **LIFETIME** **PRODUCT WARRANTY**

FynoBlock is backed by exclusive warranty, so you can be confident your investment is in safe hands.

## **GLOBAL EXPERIENCE** **LOCAL EXPERTISE**

New technologies and a modern quality control system have been implemented at the new modern & innovation plant in the USA.

Your vision. Our Pavers.





# PAVERS & SLABS



# ASPEN STONE





## Rectangular stone

# FynoBlock

This large concrete patio stone is perfect for poolside design and backyard landscaping. Available in multiple colors, Aspen Stone Smooth is the perfect paving slab to complement any modern poolside design.



Candu



Iron



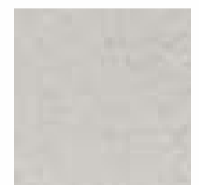
Fresh mix



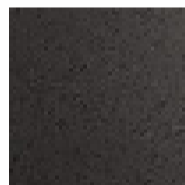
Sandy almond



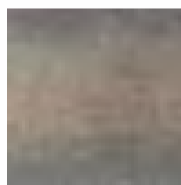
Valley of ashes



White



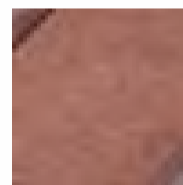
Graphite



Rockland

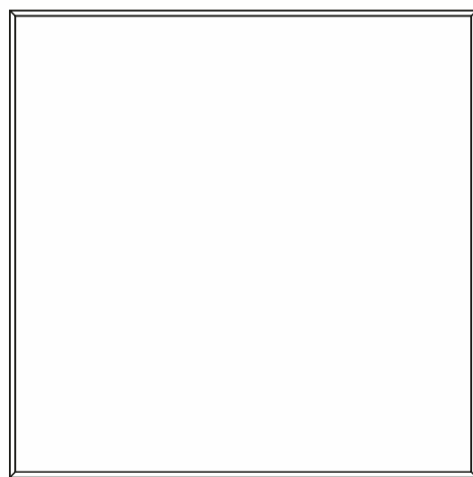


Aspen rose



Red

16" x 16" x 2"  
398 x 398 x 60 mm



≡ | Smooth





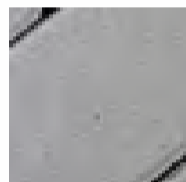
# LUNAR PATH



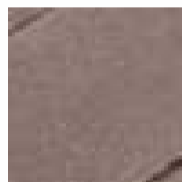
## Rectangular stone plank smooth

**FynoBlock**

With the new Lunar Path paver, you can create a lean, linear look at ground level. Our new technology offers one-of-a-kind stain resistant, vibrant color with a reduced absorption rate and a lifetime transferable warranty. It is resistant to deicing salt and withstands harsh climates.



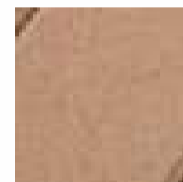
Grey



Pink



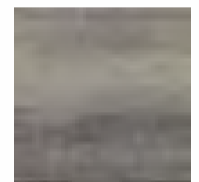
Black



Orange



Dark navy



Platinum



Bone

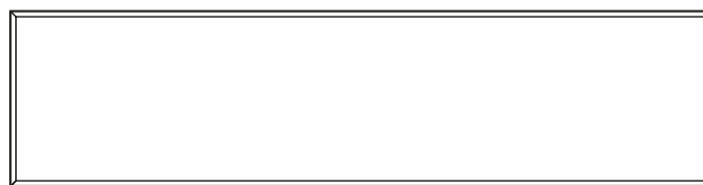


Terracotta



Rain storm

24" x 6" x 2"  
598 x 148 x 60 mm



☰ | Smooth





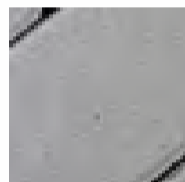
# LUNAR PATH



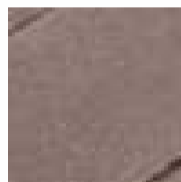
## Rectangular stone plank, textured

**FynoBlock**

With the new Lunar Path paver, you can create a lean, linear look at ground level. Whether you're designing a rustic farmhouse or traditional colonial style, its clean lines will add a contemporary touch to any landscape renovation project, as an accent or focal point of a herringbone walkway or driveway.



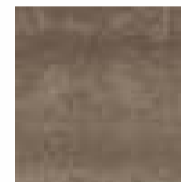
Grey



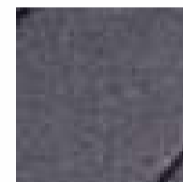
Pink



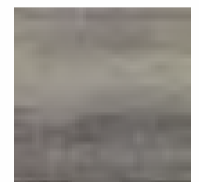
Black



Terracotta

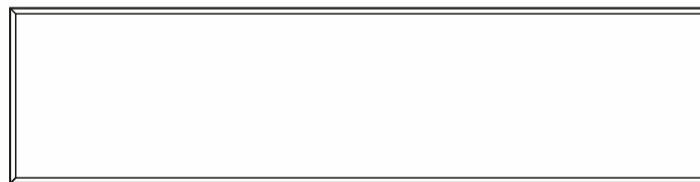


Dark navy



Platinum

24" x 6" x 2"  
598 x 148 x 60 mm



||  Wooden texture





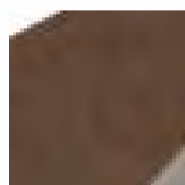
**ARONA**



## Rectangular stone cobble embossed

# FynoBlock

Having a hard time keeping your poolside clean? Are you looking to upgrade it? It's time to think outside the box! Any exterior space can be made more attractive with our new Arona slabs system. You can express your unique style in your outdoor space through our smooth, modern, and elegant Arona collection.



Brown



Black



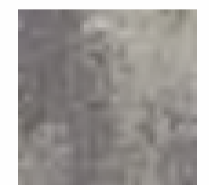
Sand



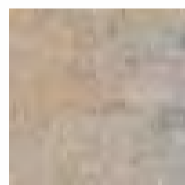
Dark grey



White



Silverstone



Mulberry silk



Nordic



Chalk biege



Pearl river

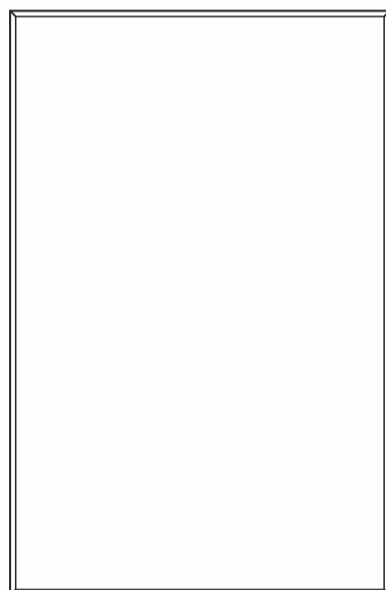


Canyon clay

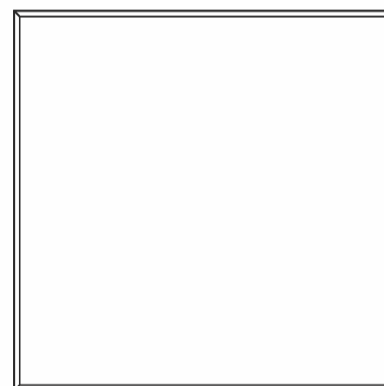


Sunflower

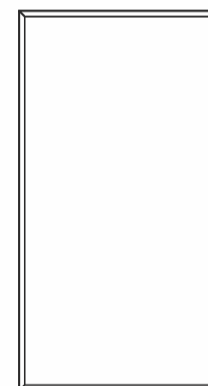
20" x 13" x 2"<sup>3</sup>/<sub>4</sub>  
506 x 336 x 70 mm



13" x 13" x 2"<sup>3</sup>/<sub>4</sub>  
336 x 336 x 70 mm



7" x 13" x 2"<sup>3</sup>/<sub>4</sub>  
166 x 336 x 70 mm



≡ | Smooth





# LAVA FALLS

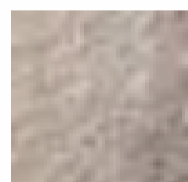




## Rectangular stone cobble embossed

# FynoBlock

Suitable for patios, pool decks, and backyard walkways, this traditional patio stone comes in a variety of sizes. Lava Falls slabs are well suited for pedestrian areas like walkways and patios thanks to their rugged texture, opulent colors and traditional look.



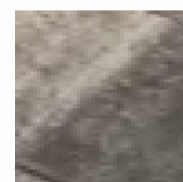
Linen



Sedona



Cape grey



Fossil



Pale gold



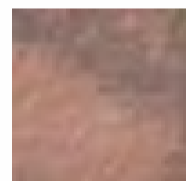
Ash



Blue



Sahara

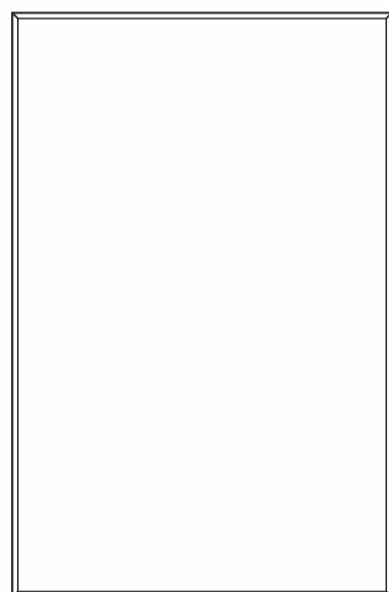


Blush

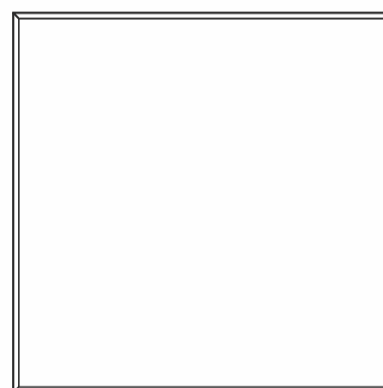


Navy

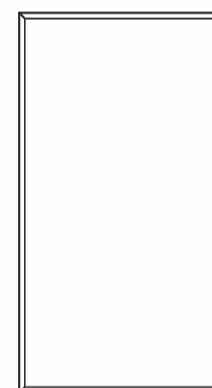
20" x 13" x 2"<sup>3</sup>/<sub>4</sub>  
506 x 336 x 70 mm



13" x 13" x 2"<sup>3</sup>/<sub>4</sub>  
336 x 336 x 70 mm



7" x 13" x 2"<sup>3</sup>/<sub>4</sub>  
166 x 336 x 70 mm



≡ | Textured





**FLINT STONE**



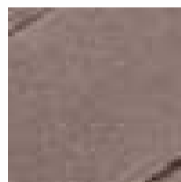
## Rectangular stone Cobble Rec / Square

**FynoBlock**

Residential and commercial driveways and patios can benefit from Flint Stone's larger cobblestone look. In order to prevent surface water from percolating into the ground, this interlocking permeable pavement was designed to offer appropriate percolation channels, preventing surface water from penetrating into the earth. Flooding risk, winter ice risks, and the cost of snow removal and deicing salt are all decreased by removing puddles and accelerating the melting of snow.



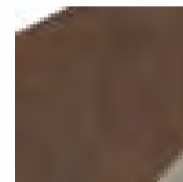
Grey



Pink



Black



Brown



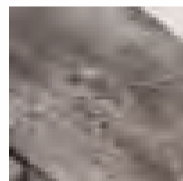
Terracota



Steel blue

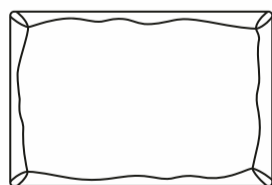


Rain storm

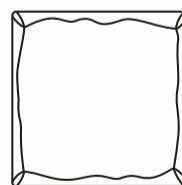


Sunflower

9" x 6" x 2"  
223 x 148 x 60 mm

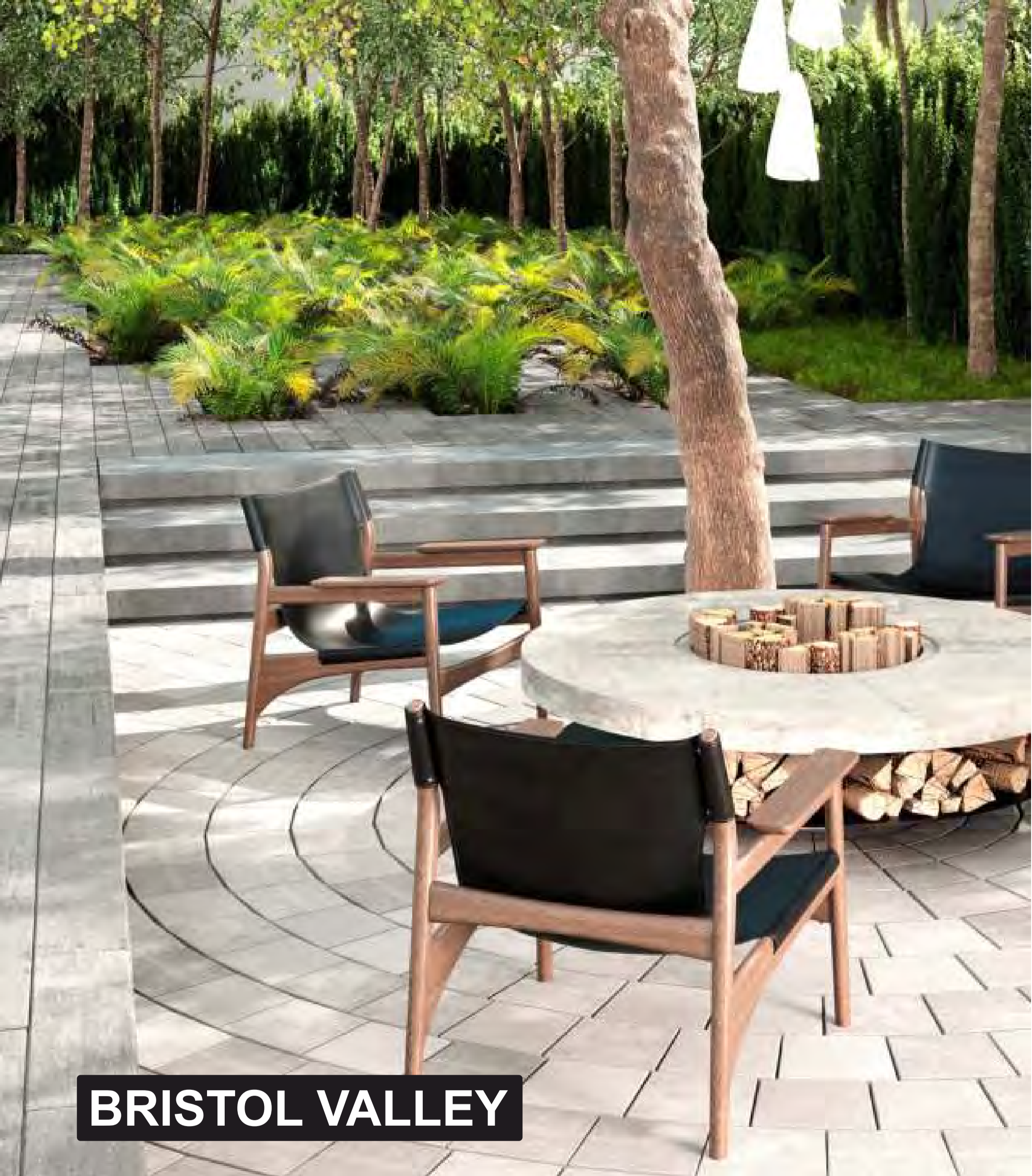


6" x 6" x 2"  
148 x 148 x 60 mm



||| | Textured





# BRISTOL VALLEY



## Rectangular stone Cobble Rec/ Square

# FynoBlock

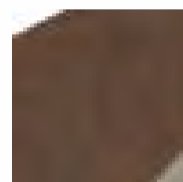
An interesting surface texture combines with Bristol Valley's penchant for geometric patterns. A modern public park, a plaza, an entertainment square, a sidewalk, or a patio could benefit from the use of this paver. Our smooth technology results in a tighter surface for the most beautiful finishes with higher particles per square inch.



White



Graphite



Brown



Yellow



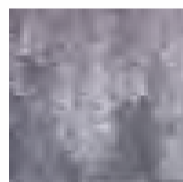
Aspen rose



Rain storm



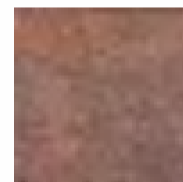
Gravel



Purple rose

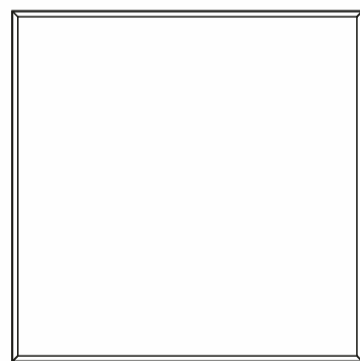


Coral island

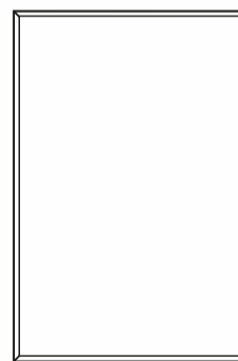


Redwood

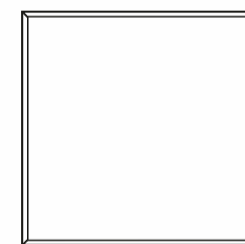
12" x 12" x 2"  
298 x 298 x 60 mm



8" x 12" x 2"  
298 x 198 x 60 mm



8" x 8" x 2"  
198 x 198 x 60 mm



≡ | Smooth





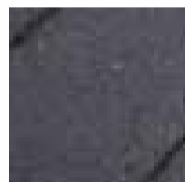
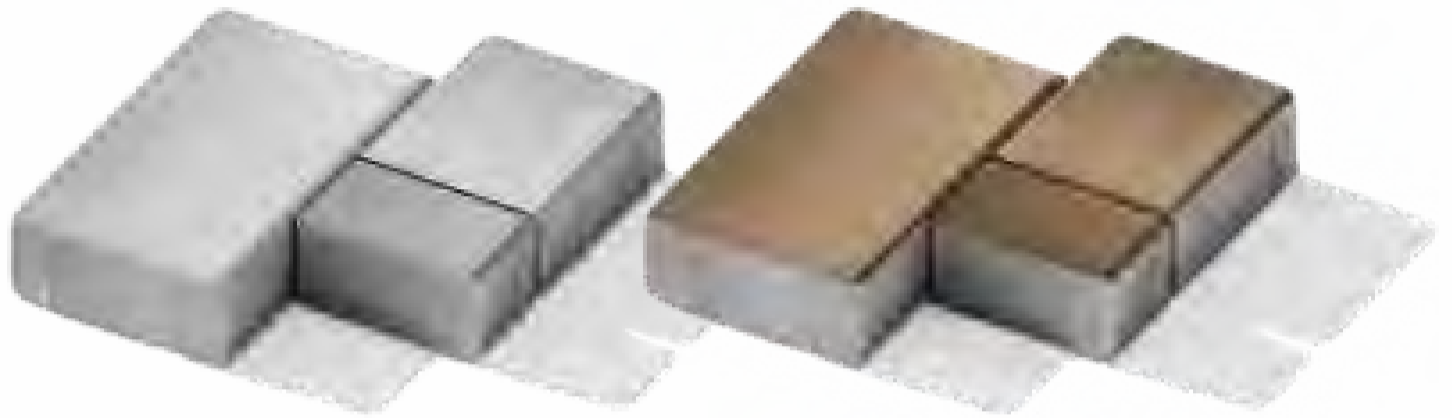
# BOHEMIAN BUFFALO



## Rectangular Tumble Stone

**FynoBlock**

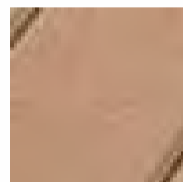
There is nothing more contemporary than the Bohemian Buffalo collection, which offers crisp, clean lines and a smooth, linear surface that makes it ideal for areas with a high foot traffic. Stunning contemporary style with clean lines, a smooth face and striking colour blends.



Dark navy



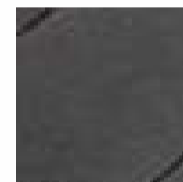
Grey



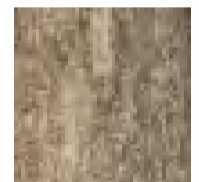
Orange



Pink



Black



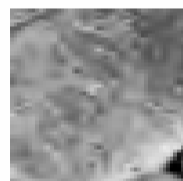
Khaki shade



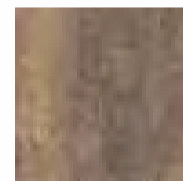
Watermelon



Naval

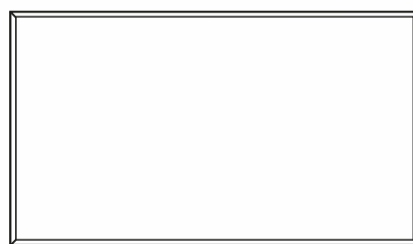


Metallic copper



Warm stone

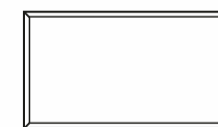
14" x 8" x 2<sup>3</sup>/<sub>4</sub>"  
348 x 208 x 70 mm



7" x 8" x 2<sup>3</sup>/<sub>4</sub>"  
173 x 208 x 70 mm



7" x 4" x 2<sup>3</sup>/<sub>4</sub>"  
173 x 103 x 70 mm



≡ | Smooth





# HOLLAND LUX

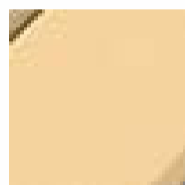




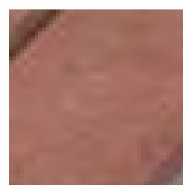
## Rectangular stone

# FynoBlock

The modern brick road is paved with the lasting, trendy, and orderly aesthetic of the Holland Lux paver. With its interlocking concrete pavers, this traditional landscape brick is given a fresh new look. It can be utilized as a decorative banding when paired with pavers that measure 60 mm. This product works well on patios, walks, driveways, and decorative bandings, and is pedestrian and vehicle friendly.



Yellow



Red



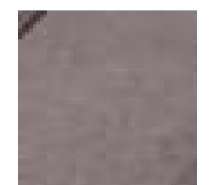
Black



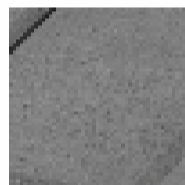
White



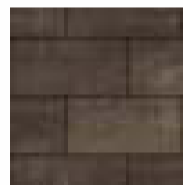
Sand



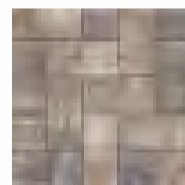
Aspen rose



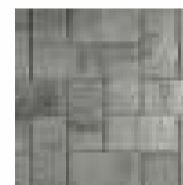
Grey



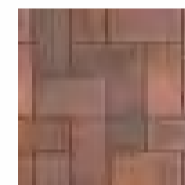
Sienna



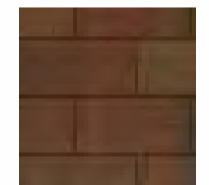
Warm sand



Light shadow

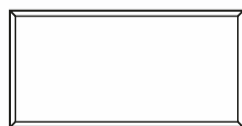


Coral



Mocha

8" x 4" x 2"  
198 x 98 x 60 mm



| ≡ | Smooth





**RETAINING WALLS**  
*\*exclusive technology*

## Retaining walls

Retaining walls are multi-functional partitions that can define and beautify any outdoor space when thoughtfully designed. Garden beds, sitting areas, privacy shields, and more, can all be enhanced with the use of custom pavers.

The innovative FynoBlock retaining wall is a gravity-reinforced wall system that can be installed as a garden wall to an infinite number of wall heights without the use of pins or clamps.

FynoBlock' innovative interlocking features enable a wide range of installation patterns and radiuses, decreasing the number of angled cuts to reduce waste and material reordering problems.

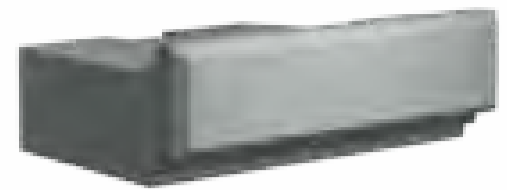




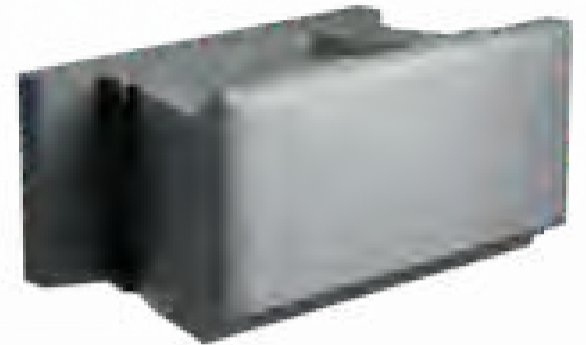
# CASCADE



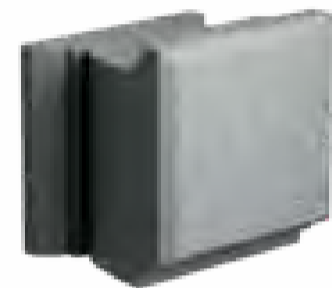
**Base block**  
Dimensions: 17.52" x 11.81" x 4"



**18" Wall block**  
Dimensions: 17.52" x 11.81" x 8"  
Available in: 4"/ 6"/ 8" heights



**9" Wall block**  
Dimensions: 8.88" x 8.19" x 8"  
Available in: 4"/ 6"/ 8" heights



**Corner block**  
Dimensions: 17.52" x 8.19" x 8"  
Available in: 4"/ 6"/ 8" heights



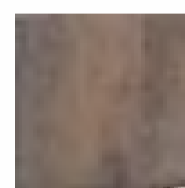
Infinity



Truffle



Earth



Walnut



Iceberg



Tobacco brown

| ≡ | Smooth





Cascade in Grey





Holland Lux in Coral



# Choose your favorite colormix

There is nothing we love more than natural hues. We carefully considered our color selection so that all of your favorites would show up in other collections, allowing you to mix, match, and contrast as you choose. We take great pride in the distinctive color combinations we use to create each product.

We are proud of our unique shades of color mix, where each product is unique.

Here are some **Do's** and **Don'ts** when selecting color choices.

## **Do**

Choose color to highlight your home's architectural features and accents.

Match colors to the current landscape palette. Before committing, lay out your final options. You will have a better understanding of the outcome by viewing your color choices lying flat.

Book a free color consultation with an expert guide.

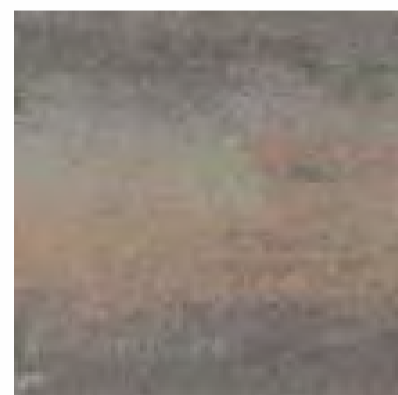
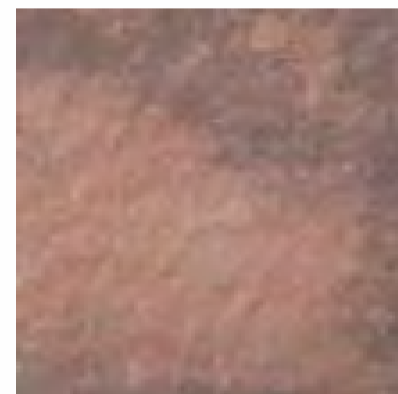
## **Don't**

Don't commit to any color without viewing it in natural light.

Don't combine more than three core colors (with the exception of wood and stone).

## **Hot tip!**

To create consistency and a pleasing contrast, choose colors that complement the existing furniture or accents in your space.



## Combining collections into a pattern

Height	Bohemian Buffalo	Lunar Path	Holland Lux	Aspen Stone	Bristol Valley	Lava Falls	Arona	Flint Stone
2"3/4	+					+	+	
2"		+	+	+	+			+

## Product details

### PAVERS & SLABS

Collection	Dimensions (inch)	Chamfer	Spacer	Surface	Total weight 1 pallet (kg)	Pieces (1 line)	Pieces (1 pallet)	Total area 1 pallet (m2)
<b>Bohemian Buffalo</b>	14" x 8" x 2"3/4	-	-	smooth	1768,16	10	80	10,08
	7" x 8" x 2"3/4					12	96	
	7" x 4" x 2"3/4					6	48	
<b>Lunar Path</b>	24" x 6" x 2"	+	+	smooth	1651,86	14	126	11,34
	24" x 6" x 2"	+	+	wooden		14	126	11,34
<b>Holland Lux</b>	8" x 4" x 2"	+	+	wooden	1793,88	66	594	11,79
<b>Aspen Stone</b>	16" x 16" x 2"	+	+	smooth	1707,84	9	72	11,52
<b>Bristol Valley</b>	12" x 12" x 2"	+	+	smooth	1701,12	16	128	11,52
	8" x 8" x 2"	+	+	smooth	1693,44	36	288	11,52
	12" x 8" x 2"	+	+	smooth	1693,44	24	192	11,52
<b>Lava Falls</b>	20" x 13" x 2"3/4	+	+	embossed	1637,36	3	24	9,60
	13" x 13" x 2"3/4	+	+	embossed		4	32	
	7" x 13" x 2"3/4	+	+	embossed		4	32	
<b>Arona</b>	20" x 13" x 2"3/4	+	+	smooth	1662,32	3	24	9,60
	13" x 13" x 2"3/4	+	+	smooth		4	32	
	7" x 13" x 2"3/4	+	+	smooth		4	32	
<b>Flint Stone</b>	9" x 6" x 2"	+	+	embossed	1568,70	35	315	10,62
	6" x 6" x 2"	+	+	embossed		56	504	

### RETAINING WALLS

Collection	Dimensions (inch)	Chamfer	Spacer	Surface	Pieces (1 line)	Pieces (1 pallet)	Total area 1 pallet (m2)
<b>Cascade</b>	17.52" x 11.81" x 4"	+	+	smooth	56	504	11,34
				smooth			
Base block	17.52" x 11.81" x 4"	+	+	smooth	56	504	11,34
Wall block	8.88" x 8.19" x 8"	+	+	smooth	56	504	11,34
Corner block	17.52" x 8.19" x 8"	+	+	smooth	56	504	11,34

\*available in: 4"/6"/8" heights





## Compactor and snow removal equipment

Pavers with an embossed surface (high and low points) are more susceptible to scuff marks from vibratory plate compactors used in most concrete paver installations. FynoBlock recommends the use of a urethane mat between the plate and the paver surface during compacting. Contact your equipment supplier for more information about accessories for this purpose. Also, snow removal equipment should have the proper spacing, bumpers, and rubber blade guards to protect the surface of the pavers. FynoBlock is not responsible for damage caused by the misuse of compaction or snow removal equipment, which may leave scuff marks on pavers.



# Pavers that last a lifetime

## Paver foundation

With over 25 years of experience, we use the latest European technology and the most advanced equipment. The FynoBlock stones can withstand any type of climate, making them perfect for any type of landscape.



De-icing salt



Resistant permeable



Eco-friendly



Durability



Detailed texture



Quality



## A standard of care

High-quality concrete products require the same maintenance as any other product that is exposed to the environment 365 days a year. Similar to cleaning patio furniture, a car's chrome, plastic, or paint, etc., very gentle cleaning with detergents, water, and product-specific chemicals is required to increase their presence and appeal. For further defense against acid rain, stains, and the worst of nature, protective coatings of every kind—high, moderate, and low sheen, pigmented or tinted, penetrating or film forming—are available. Take care of your investments to receive the maximum return on your money, and they will take care of you.

## Polymeric haze

Polymeric haze from the use of polymeric joint sand may appear on your concrete products if the sand was not properly removed from the surface of the paver. This does not, in any way, affect the integrity of the product or your installation. The hazing will weather away naturally with time and rain, or it can be removed with a specialized cleaner. For directions and suggestions, you are advised to get in touch with your contractor or the supplier of the polymeric sand.

## Efflorescence

This warranty does not apply to efflorescence. Efflorescence is a natural occurring process in all concrete products which sometimes appears in the form of a white powdery film on the pavement surface. Efflorescence is more perceivable in darker colours such as Onyx Black and Chocolate Brown as there is a higher level of contrast than with other blended colours. It does not, in any way, compromise the functionality or the structural integrity of the product.

## Color

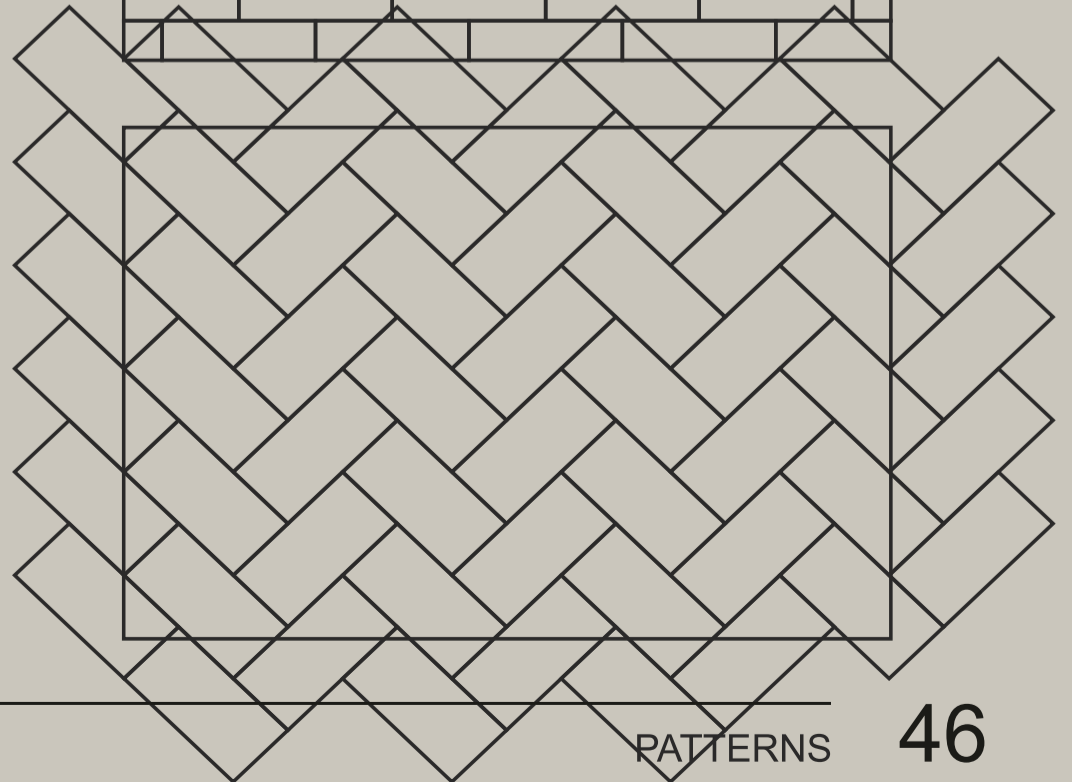
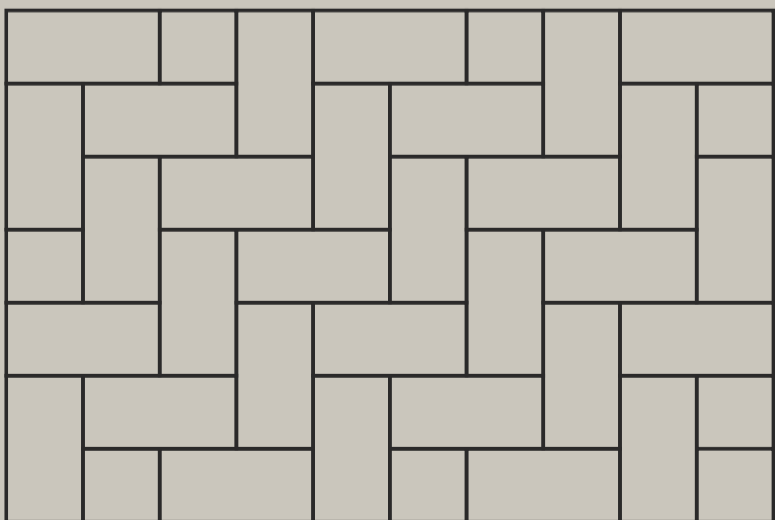
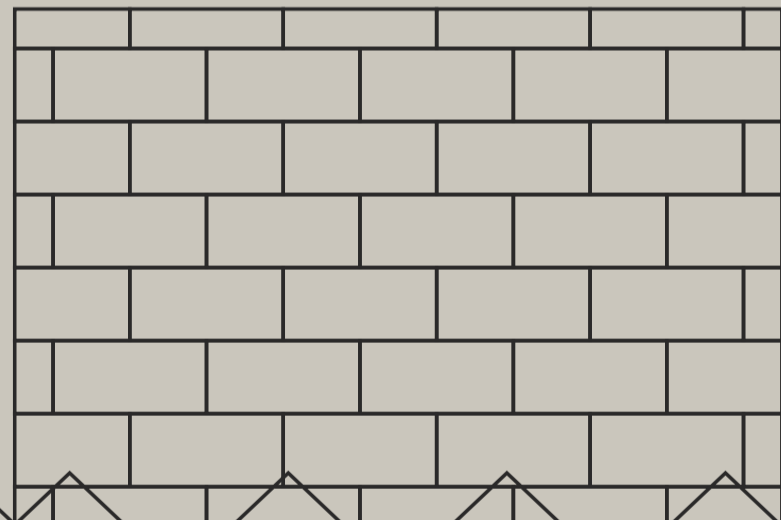
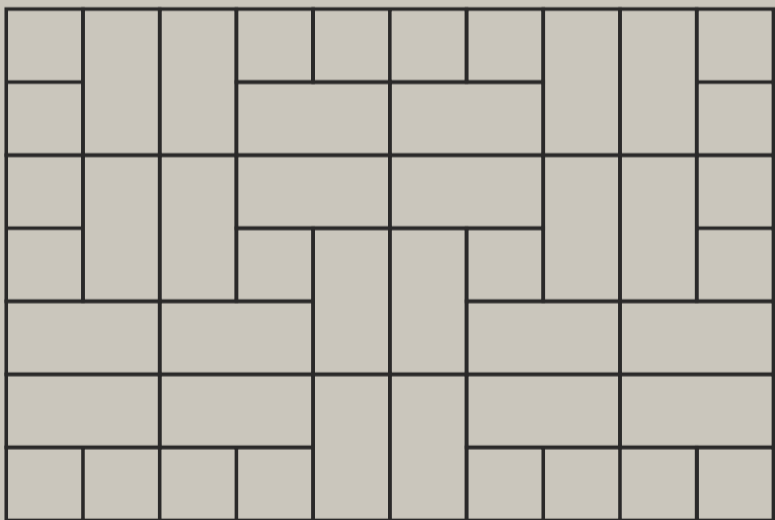
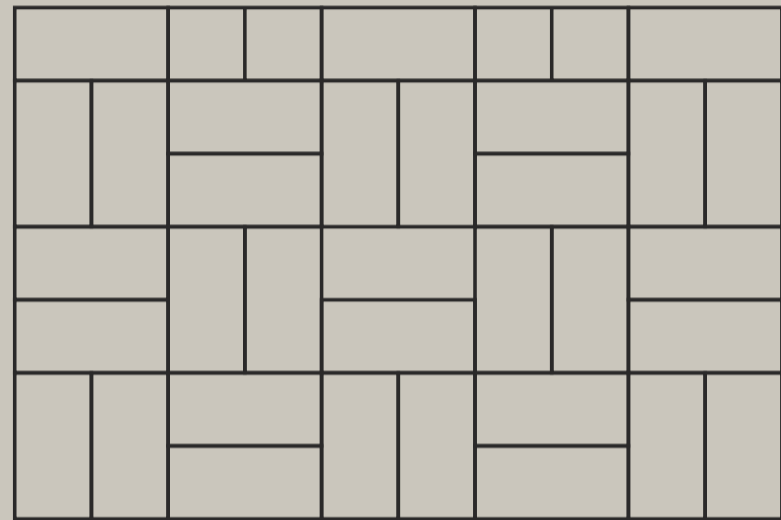
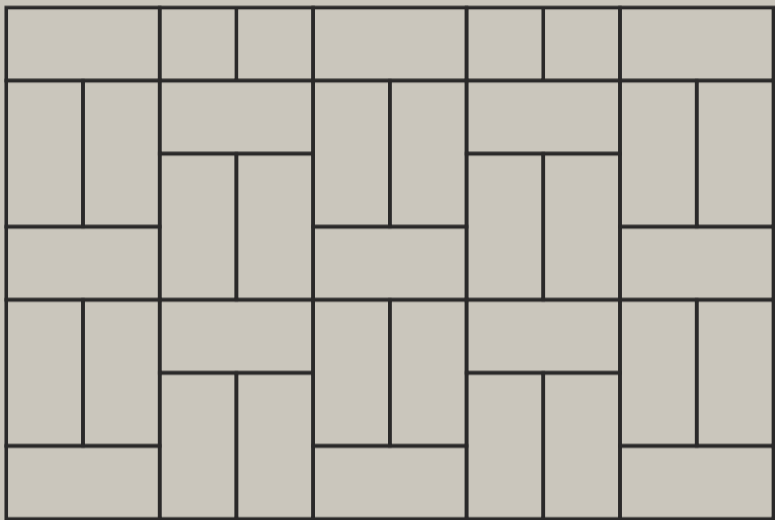
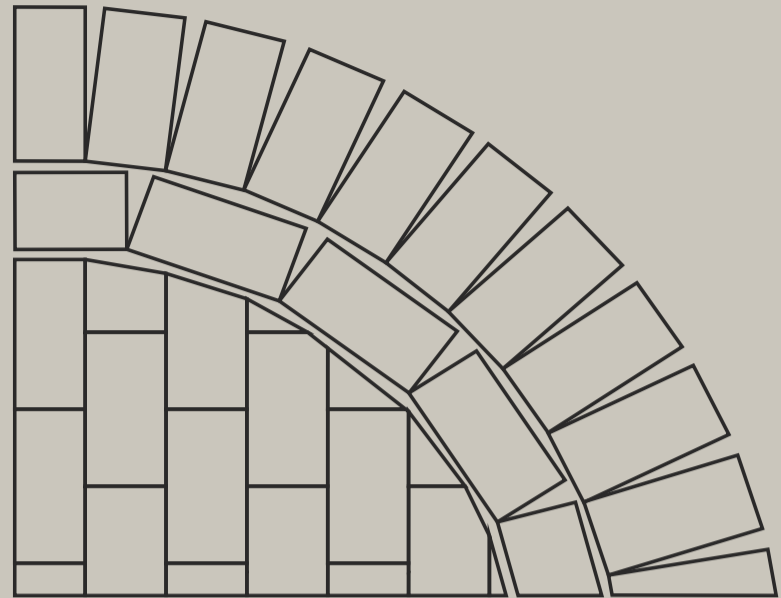
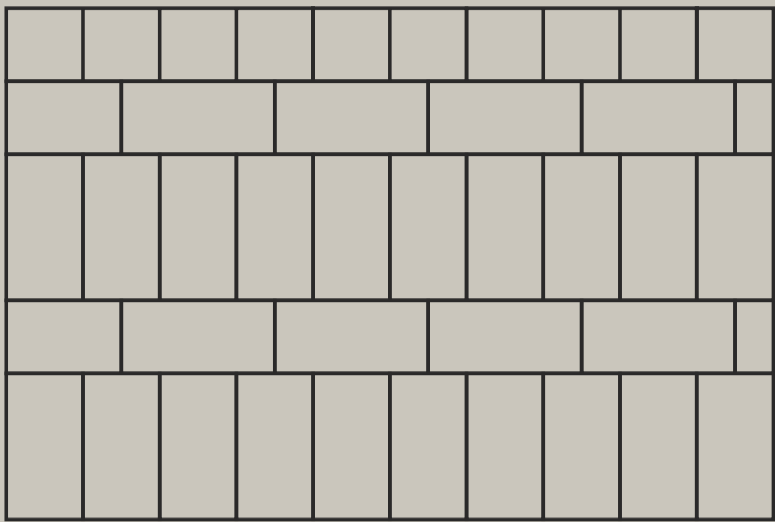
Each color option is comprised up of several lighter and darker tones. To allow for a variety of tones, veining, and textures from one stone to another, natural elements like granite are included in the mix. Orange Pavers cannot guarantee exact color matching to printed versions of its color swatches due to the inherent nature of printed literature and current digital media. The color samples shown are approximate representations of our standard colors, and actual product colors may differ. Therefore, the final color choice should be taken from the product that is in stock at your local retailer.

## Construction residue

A by-product of cutting with a saw is residue-filled water or concrete dust. Residue filled water or re-hydrated dust can cling to the surface and leave a concrete stain. It is recommended to wash and remove the water or concrete dust from the surface of the pavers before it dries. Construction residue can also happen through soil disturbance or environmental elements.



# Paving patterns





Aspen Stone in Valley of ashes  
Aspen Stone in Iron  
Lunar path in Black

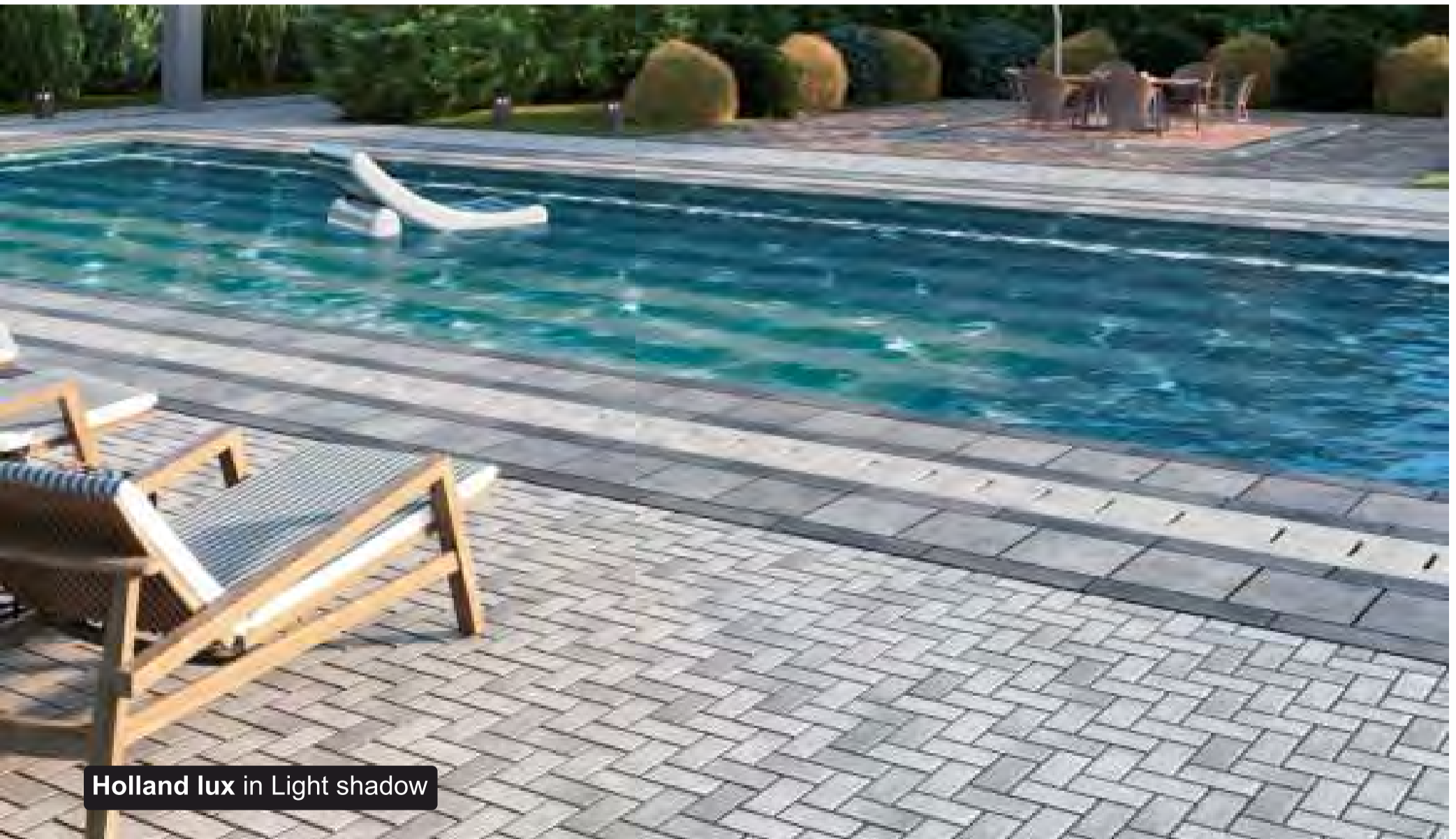


Aspen Stone in White





**Bohemian buffalo in Grey, Metallic copper**



**Holland lux in Light shadow**

## Commercial & Industrial

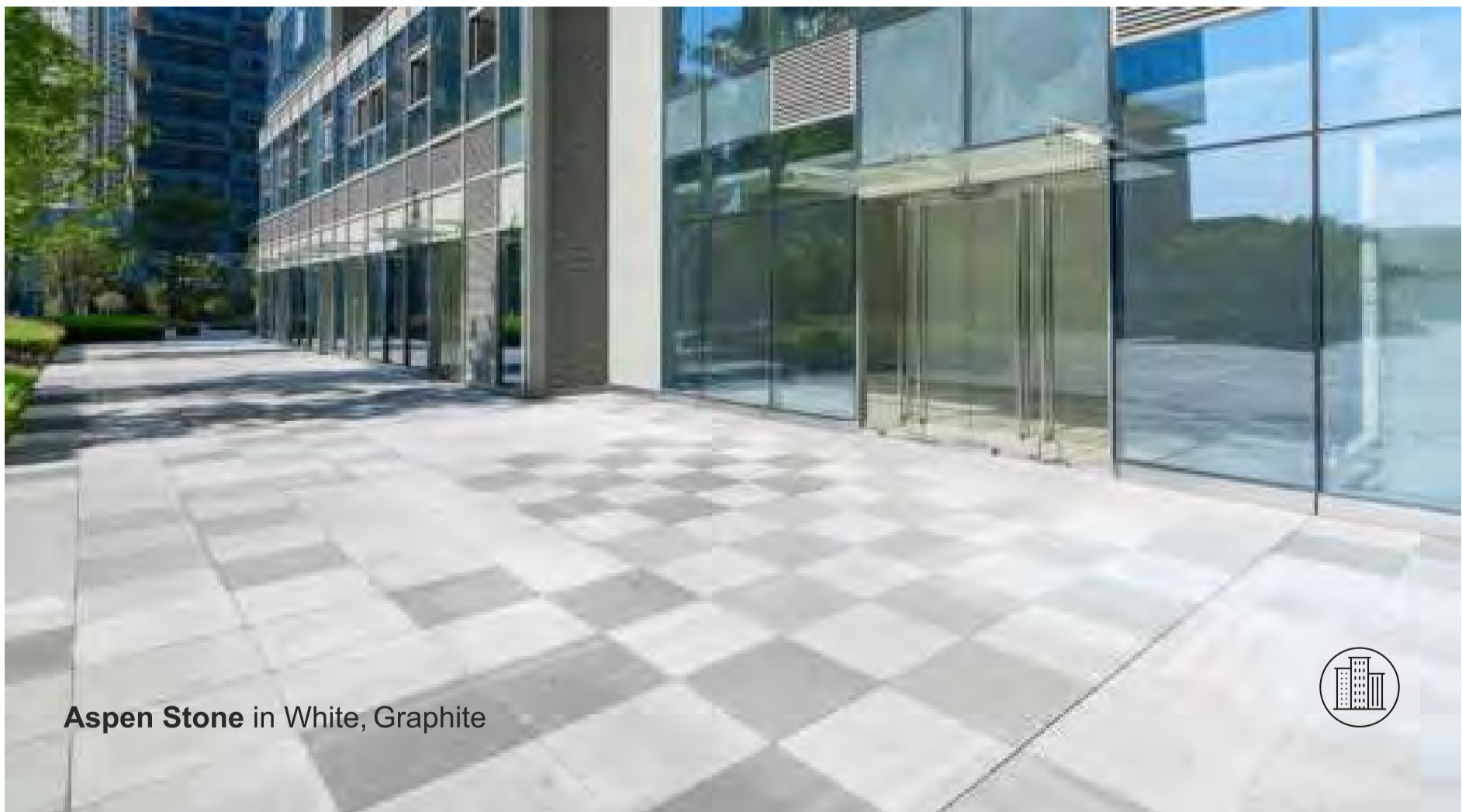
For high-quality, long-lasting pavers, trust the experts!

Across a variety of scales, we strive to achieve the ideal harmony between organic colors and realistic textures.

Our commercial-grade pavements are designed to protect the pavement's lifespan from rigorous application and harsh weather conditions.



Holland Lux in Light Shadow



Aspen Stone in White, Graphite



Lunar Path in Grey

COMMERCIAL & INDUSTRIAL

50

# FynoBlock

Your vision. Our Pavers



fynoblock.com  
hello@fynoblock.com  
646.980.2491